

Town of Warren, CT.  
Tax Map: 49

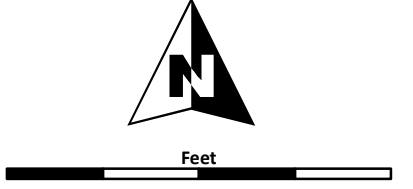
- Parcel Boundary
- Municipal Boundary
- Major Road
- Local Road
- Zoning District
- Poorly Drained and Very Poorly Drained Soils
- Water
- Watercourse



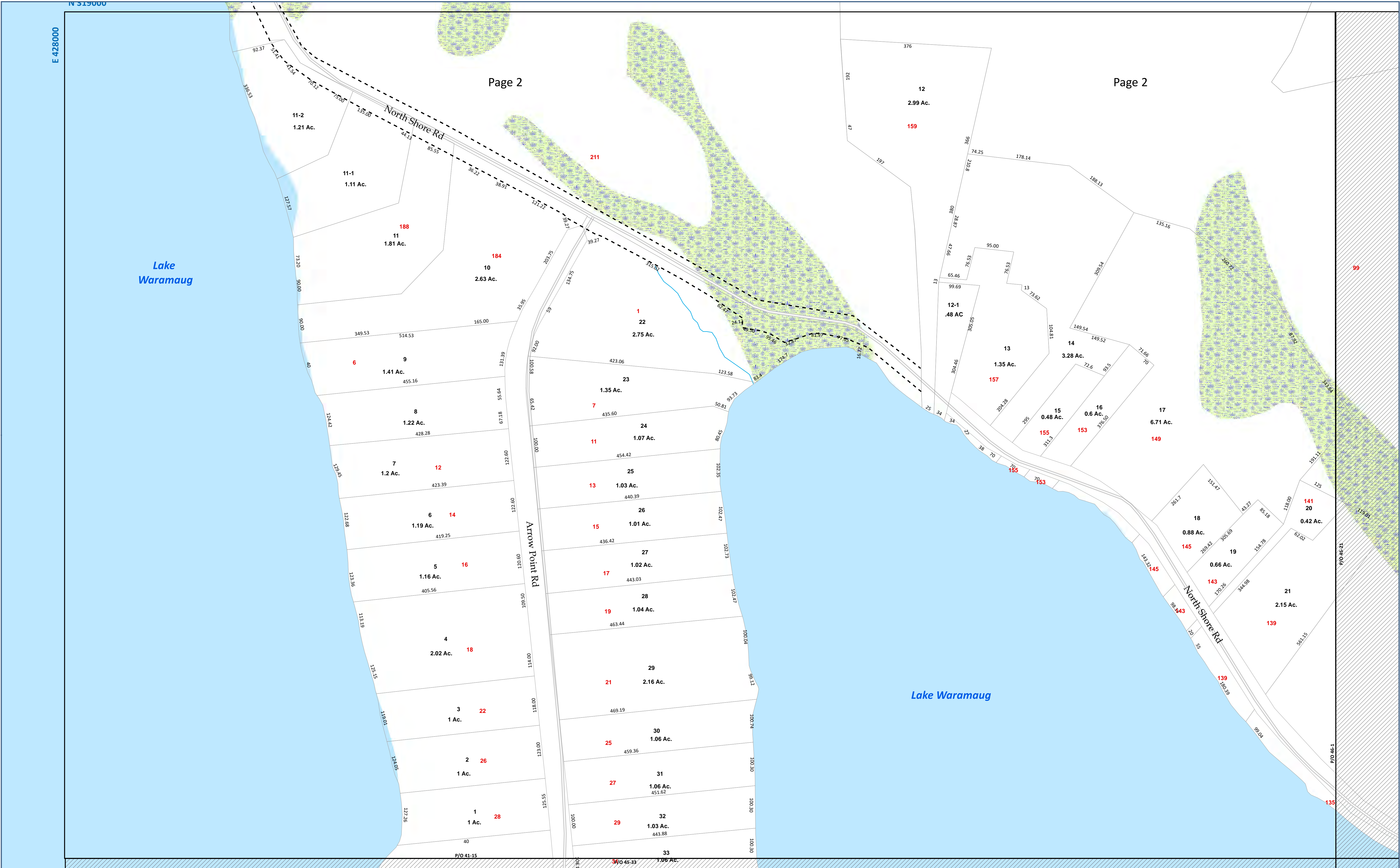
Sources:  
Connecticut Department of Energy & Environmental Protection  
Environmental Geographic Information Center (EGIC),  
Northwest Conservation District, Housatonic Valley Association,  
Tele-Atlas Road Centerlines,  
Town of Warren Assessor Office  
Tax Parcel Data Updated October 2022.

NOTES: Parcels were digitized from town of Warren Tax Assessor Maps, originally produced by the James W. Sewall and Company, 1988. Updated by Northwest Conservation District, 2008-2015 and by The Housatonic Valley Association in 2022.  
This map is not to be used as an accurate survey or as a substitute for field assessment.  
Hydrographic features are based on USGS topographic quad sheets, original digitized data of James W. Sewall and the Soil Survey Geographic (SSURGO) database.

Tax Maps & Map Updates by:  
Housatonic Valley Association  
150 Kent Road Box 28  
Cornwall Bridge, CT 06754  
860.673.6678  
hvamaps@gmail.org







Town of Warren, CT.  
Tax Map: 45

Parcel Boundary  
Municipal Boundary

Major Road  
Local Road  
Zoning District

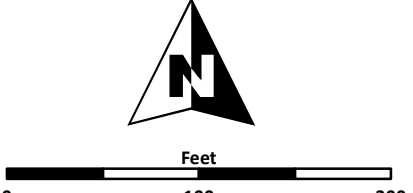
Poorly Drained and Very Poorly Drained Soils  
Water  
Watercourse



Sources:  
Connecticut Department of Energy & Environmental Protection  
Environmental Geographic Information Center (EGIC),  
Northwest Conservation District, Housatonic Valley Association,  
Tale-Atlas Road Centerlines,  
Town of Warren Assessor Office  
Tax Parcel Data Updated October 2022.

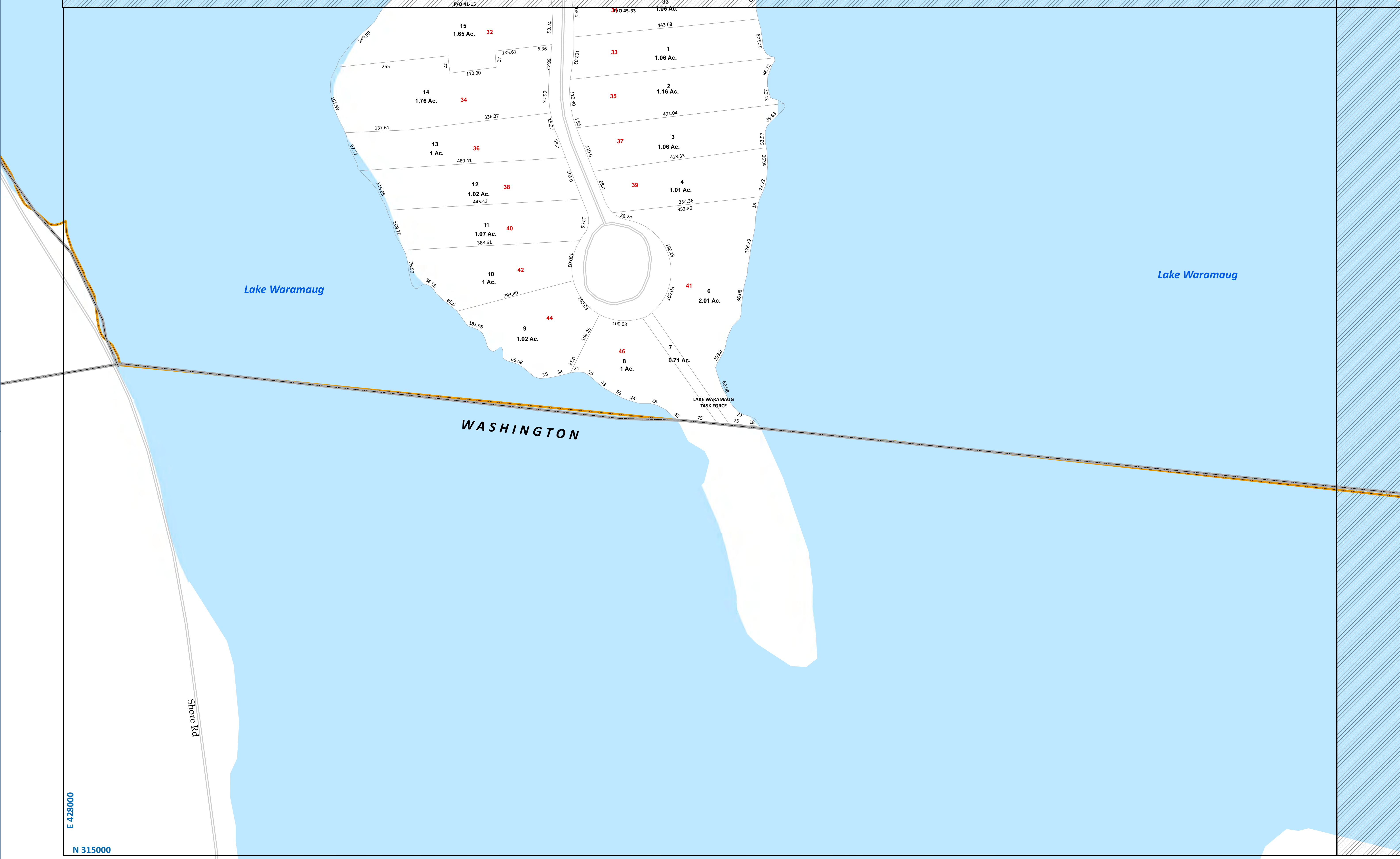
NOTES: Parcels were digitized from town of Warren Tax Assessor Maps, originally produced by the James W. Sewall and Company, 1988. Updated by Northwest Conservation District, 2008-2015 and by The Housatonic Valley Association in 2022.  
This map is not to be used as an accurate survey or as a substitute for field assessment.  
Hydrographic features are based on USGS topographic quad sheets, original digitized data of James W. Sewall and the Soil Survey Geographic (SSURGO) database.

Tax Maps & Map Updates by:  
Housatonic Valley Association  
150 Kent Road Box 28  
Cornwall Bridge, CT 06754  
860.672.6678  
hvamaps@gmail.com



45	46
41	42





# Town of Warren, CT. Tax Map: 41

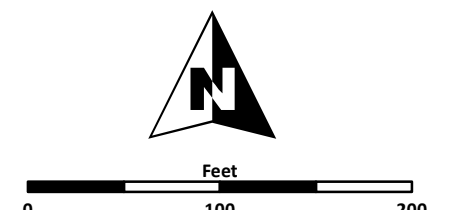
- Parcel Boundary
- Municipal Boundary
- Major Road
- Local Road
- Zoning District
- Poorly Drained and Very Poorly Drained Soils
- Water
- Watercourse



Sources:  
Connecticut Department of Energy & Environmental Protection  
Environmental Geographic Information Center (EGIC),  
Northwest Conservation District, Housatonic Valley Association,  
Tale-Atlas Road Centerlines,  
Town of Warren Assessor Office  
Tax Parcel Data Updated October 2022.

NOTES: Parcels were digitized from town of Warren Tax Assessor Maps, originally produced by the James W. Sewall and Company, 1988. Updated by Northwest Conservation District, 2008-2015 and by The Housatonic Valley Association in 2022.  
This map is not to be used as an accurate survey or as a substitute for field assessment.  
Hydrographic features are based on USGS topographic quad sheets, original digitized data of James W. Sewall and the Soil Survey Geographic (SSURGO) database.

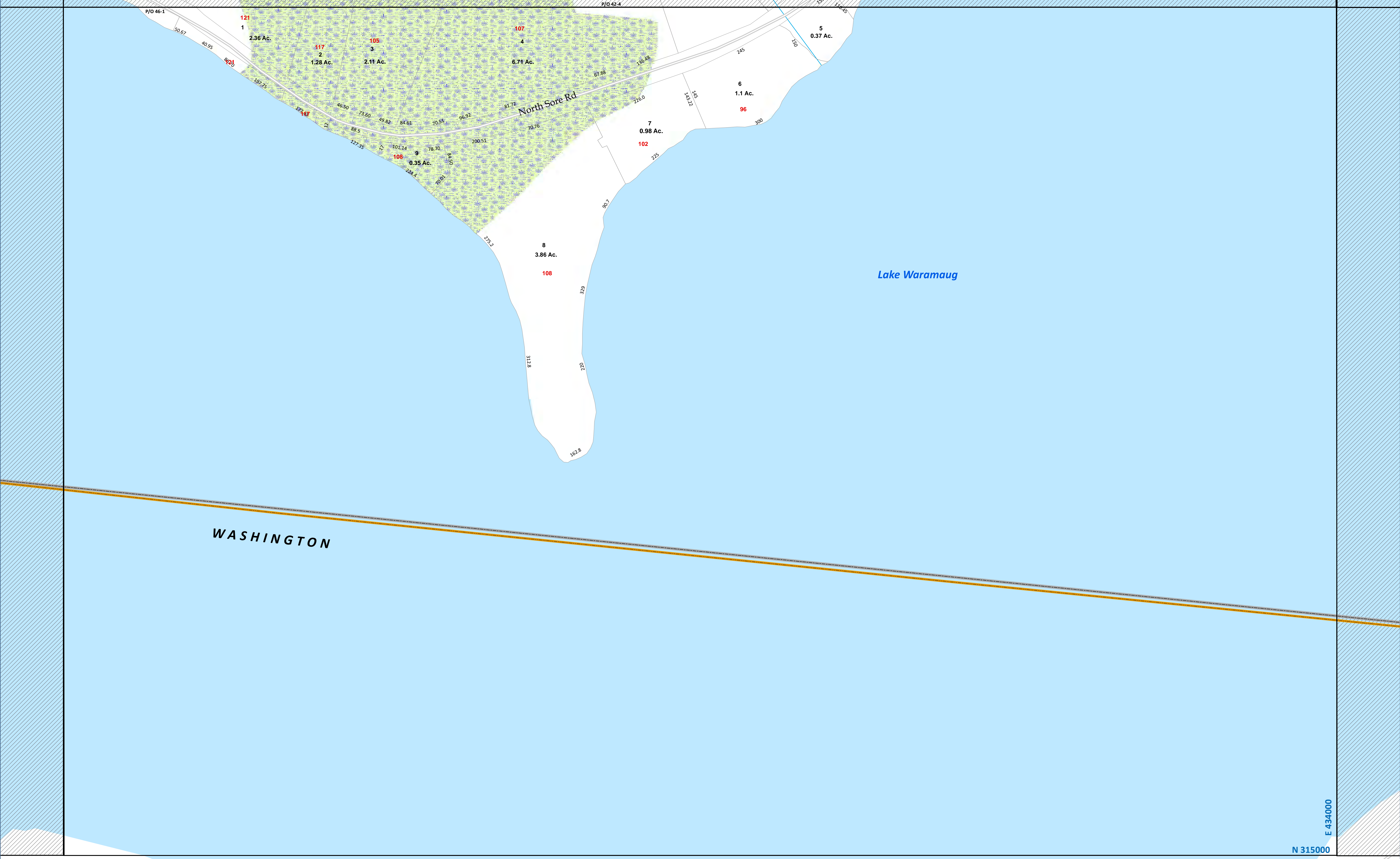
Tax Maps & Map Updates by:  
Housatonic Valley Association  
150 Kent Road Box 28  
Cornwall Bridge, CT 06754  
860.672.6678  
hvamaps@gmail.org



45	46
41	42

Prepared by: Stacy Downing, GISD





# Town of Warren, CT. Tax Map: 42

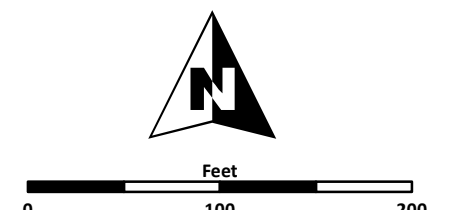
- Parcel Boundary
- Municipal Boundary
- Major Road
- Local Road
- Zoning District
- Poorly Drained and Very Poorly Drained Soils
- Water
- Watercourse



Sources:  
Connecticut Department of Energy & Environmental Protection  
Environmental Geographic Information Center (EGIC),  
Northwest Conservation District, Housatonic Valley Association,  
Tele-Atlas Road Centerlines,  
Town of Warren Assessor Office  
Tax Parcel Data Updated October 2022.

NOTES: Parcels were digitized from town of Warren Tax Assessor Maps, originally produced by the James W. Sewall and Company, 1988. Updated by Northwest Conservation District, 2008-2015 and by The Housatonic Valley Association in 2022.  
This map is not to be used as an accurate survey or as a substitute for field assessment.  
Hydrographic features are based on USGS topographic quad sheets, original digitized data of James W. Sewall and the Soil Survey Geographic (SSURGO) database.

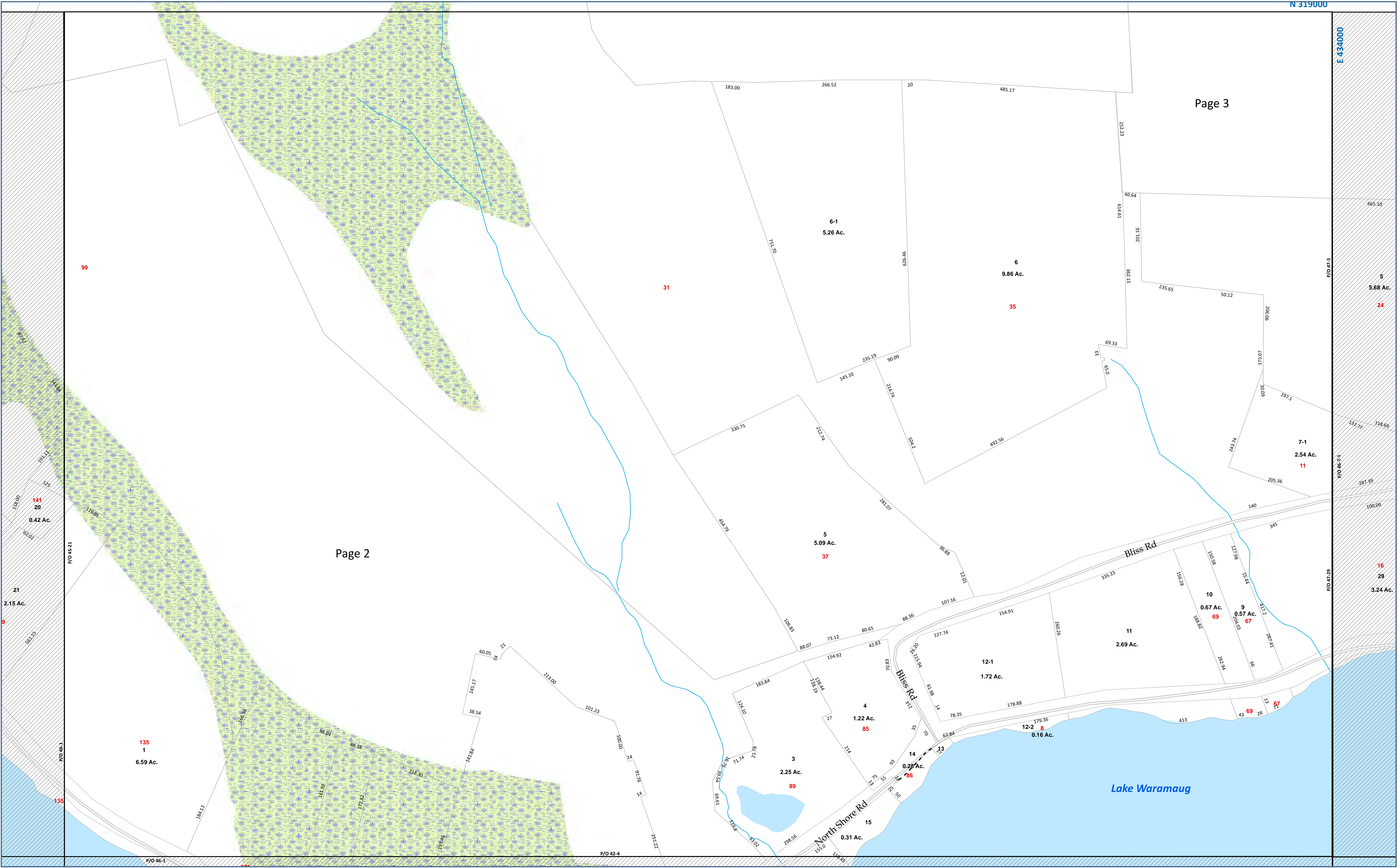
Tax Maps & Map Updates by:  
Housatonic Valley Association  
150 Kent Road Box 28  
Cornwall Bridge, CT 06754  
860.672.6678  
hvamaps@gmail.org



45	46	47
41	42	43

Prepared by: Stacy Downing, GISD









Town of Warren, CT.  
Tax Map: 47

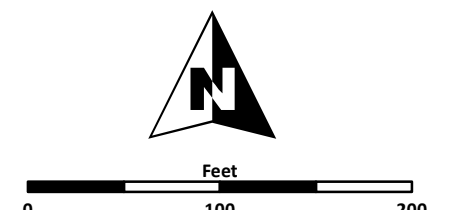
- Parcel Boundary
- Municipal Boundary
- Major Road
- Local Road
- Zoning District
- Poorly Drained and Very Poorly Drained Soils
- Water
- Watercourse



Sources:  
Connecticut Department of Energy & Environmental Protection  
Environmental Geographic Information Center (EGIC),  
Northwest Conservation District, Housatonic Valley Association,  
Tele-Atlas Road Centerlines,  
Town of Warren Assessor Office  
Tax Parcel Data Updated October 2022.

NOTES: Parcels were digitized from town of Warren Tax Assessor Maps, originally produced by the James W. Sewall and Company, 1988. Updated by Northwest Conservation District, 2008-2015 and by The Housatonic Valley Association in 2022.  
This map is not to be used as an accurate survey or as a substitute for field assessment.  
Hydrographic features are based on USGS topographic quad sheets, original digitized data of James W. Sewall and the Soil Survey Geographic (SSURGO) database.

Tax Maps & Map Updates by:  
Housatonic Valley Association  
150 Kent Road Box 28  
Cornwall Bridge, CT 06754  
860.673.6678  
hvamaps@gmail.org



46	47	48
42	43	44





Town of Warren, CT.  
Tax Map: 43

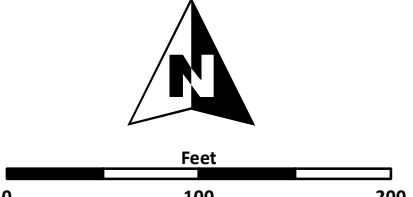
- Parcel Boundary
- Municipal Boundary
- Major Road
- Local Road
- Zoning District
- Poorly Drained and Very Poorly Drained Soils
- Water
- Watercourse



Sources:  
Connecticut Department of Energy & Environmental Protection  
Environmental Geographic Information Center (EGIC),  
Northwest Conservation District, Housatonic Valley Association,  
Tele-Atlas Road Centerlines,  
Town of Warren Assessor Office  
Tax Parcel Data Updated October 2022.

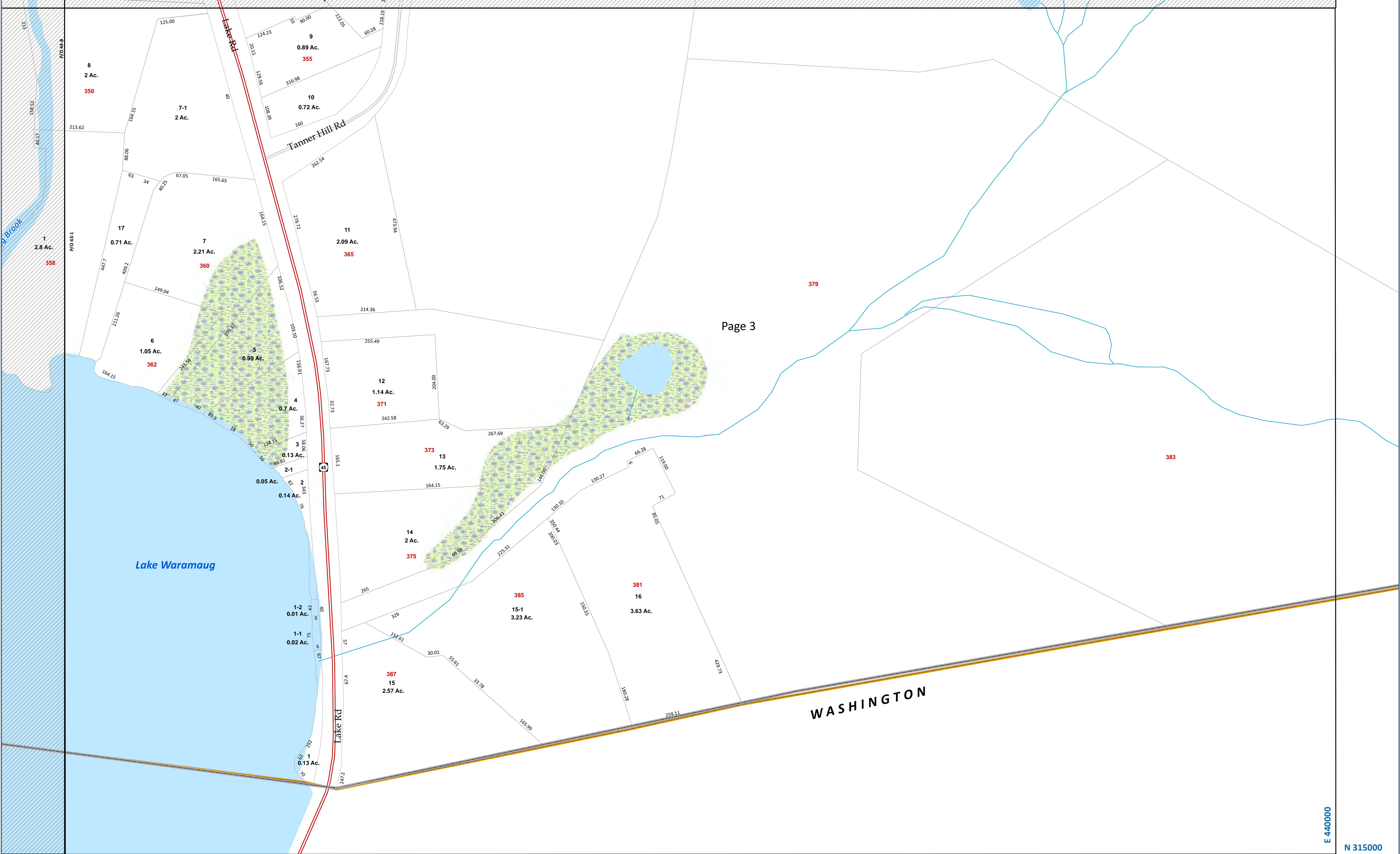
NOTES: Parcels were digitized from town of Warren Tax Assessor Maps, originally produced by the James W. Sewall and Company, 1988. Updated by Northwest Conservation District, 2008-2015 and by The Housatonic Valley Association in 2022.  
This map is not to be used as an accurate survey or as a substitute for field assessment.  
Hydrographic features are based on USGS topographic quad sheets, original digitized data of James W. Sewall and the Soil Survey Geographic (SSURGO) database.

Tax Maps & Map Updates by:  
Housatonic Valley Association  
150 Kent Road Box 28  
Cornwall Bridge, CT 06754  
860.673.6678  
hvamaps@gmail.org



46	47	48
42	43	44





# Town of Warren, CT. Tax Map: 44

Parcel Boundary  
Municipal Boundary

Major Road  
Local Road  
Zoning District

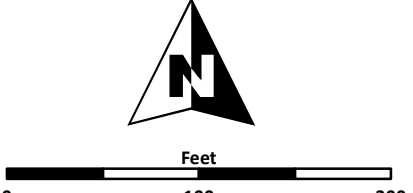
Poorly Drained and Very Poorly Drained Soils  
Water  
Watercourse



Sources:  
Connecticut Department of Energy & Environmental Protection  
Environmental Geographic Information Center (EGIC),  
Northwest Conservation District, Housatonic Valley Association,  
Tele-Atlas Road Centerlines,  
Town of Warren Assessor Office  
Tax Parcel Data Updated October 2022.

NOTES: Parcels were digitized from town of Warren Tax Assessor Maps, originally produced by the James W. Sewall and Company, 1988. Updated by Northwest Conservation District, 2008-2015 and by The Housatonic Valley Association in 2022.  
This map is not to be used as an accurate survey or as a substitute for field assessment.  
Hydrographic features are based on USGS topographic quad sheets, original digitized data of James W. Sewall and the Soil Survey Geographic (SSURGO) database.

Tax Maps & Map Updates by:  
Housatonic Valley Association  
150 Kent Road Box 28  
Cornwall Bridge, CT 06754  
860.673.6678  
hvamaps@gmail.org



47	48
43	44



